

ELEVATION A



Plum Island II

2323 SQ. FT. | 3 BEDROOMS | 3 BATHS | FLEX ROOM



© 2020

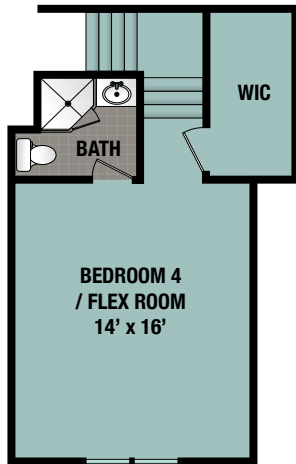
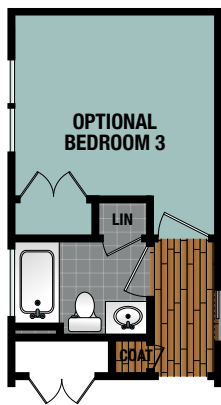
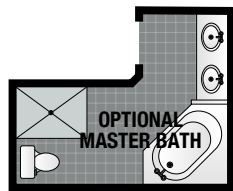
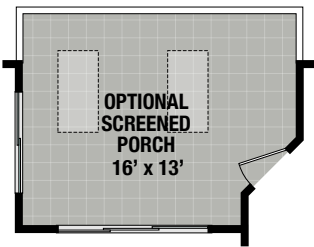
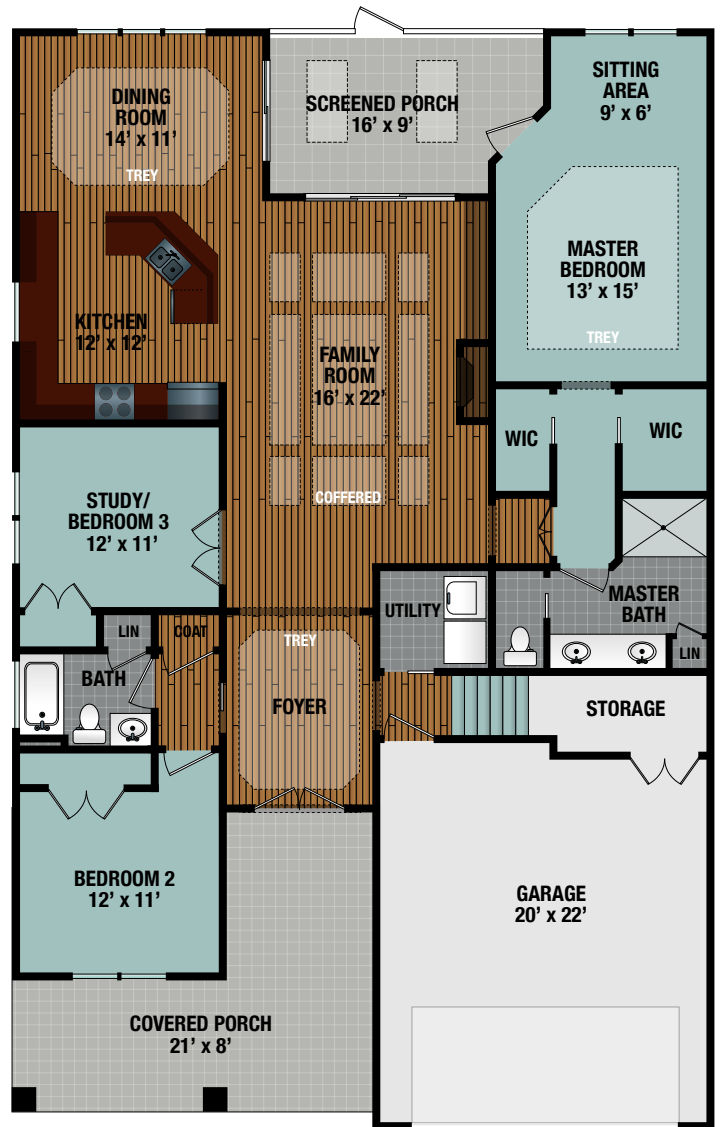
This floorplan is an artist's illustration of a simplified general preliminary plan, is incomplete, and is subject to future revision. Dimensions, boundaries and relative locations shown on this floorplan and other promotional materials are for illustrative purposes only, and final construction plans, including dimensions, layout and area, may vary from this floorplan. Final construction plans will be available for review before contract execution.

ELEVATION A



Plum Island II

2323 SQ. FT. | 3 BEDROOMS | 3 BATHS | FLEX ROOM



© 2020

This floorplan is an artist's illustration of a simplified general preliminary plan, is incomplete, and is subject to future revision. Dimensions, boundaries and relative locations shown on this floorplan and other promotional materials are for illustrative purposes only, and final construction plans, including dimensions, layout and area, may vary from this floorplan. Final construction plans will be available for review before contract execution.