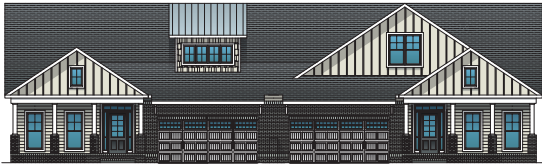


ELEVATION F1 LEFT

ELEVATION F1 RIGHT

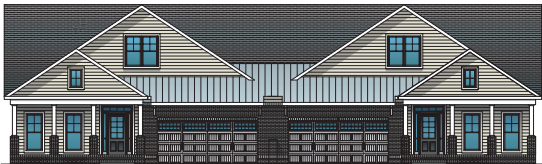
Linville

2361 SQ. FT. | 3 BEDROOMS | 3 BATHS | STUDY



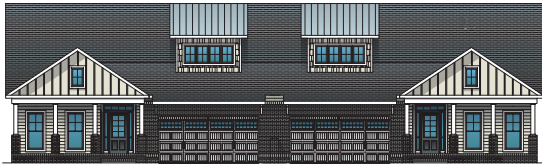
ELEVATION F2 LEFT

ELEVATION F2 RIGHT



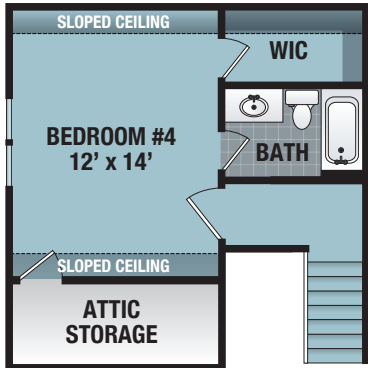
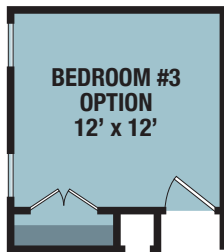
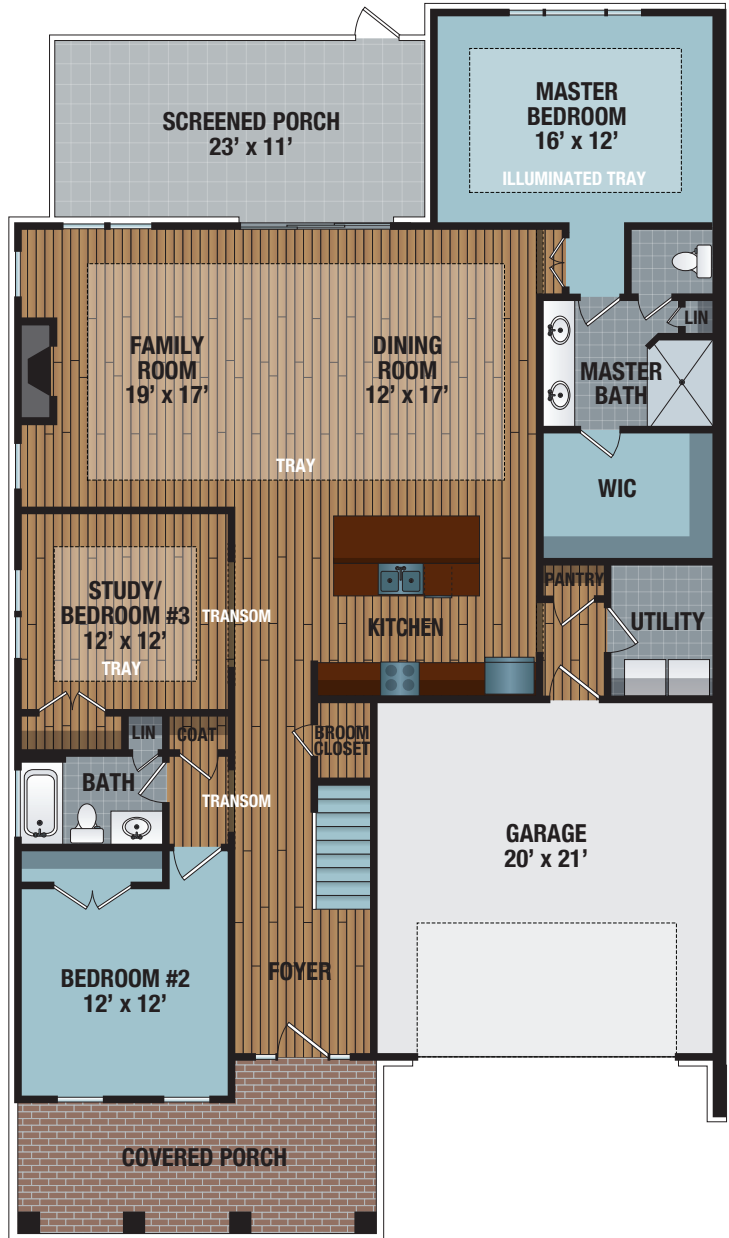
ELEVATION F3 LEFT

ELEVATION F3 RIGHT

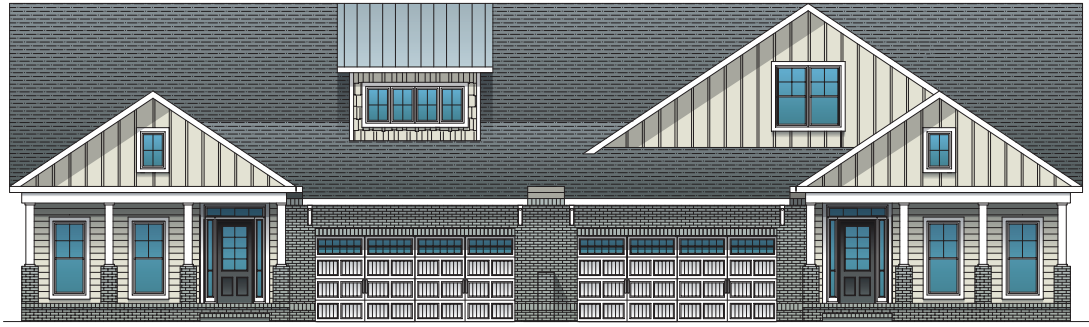


ELEVATION F4 LEFT

ELEVATION F4 RIGHT



© 2019 Trusst Builder Group
 This floorplan is an artist's illustration of a simplified general preliminary plan, is incomplete, and is subject to future revision. Dimensions, boundaries and relative locations shown on this floorplan and other promotional materials are for illustrative purposes only, and final construction plans, including dimensions, layout and area, may vary from this floorplan. Final construction plans will be available for review before contract execution.

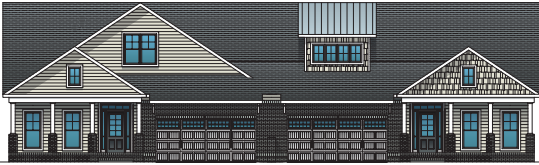


ELEVATION F2 LEFT

ELEVATION F2 RIGHT

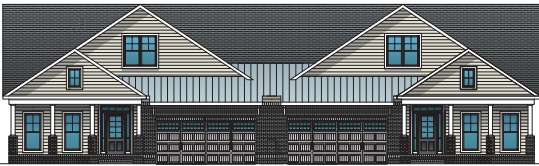
Linville

2361 SQ. FT. | 3 BEDROOMS | 3 BATHS | STUDY



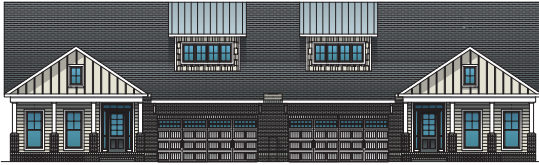
ELEVATION F1 LEFT

ELEVATION F1 RIGHT



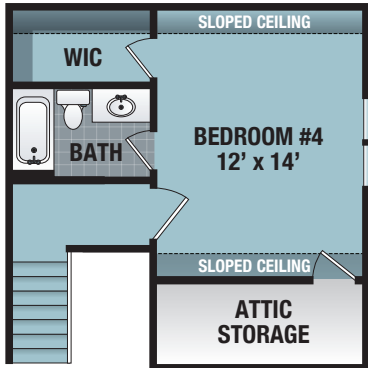
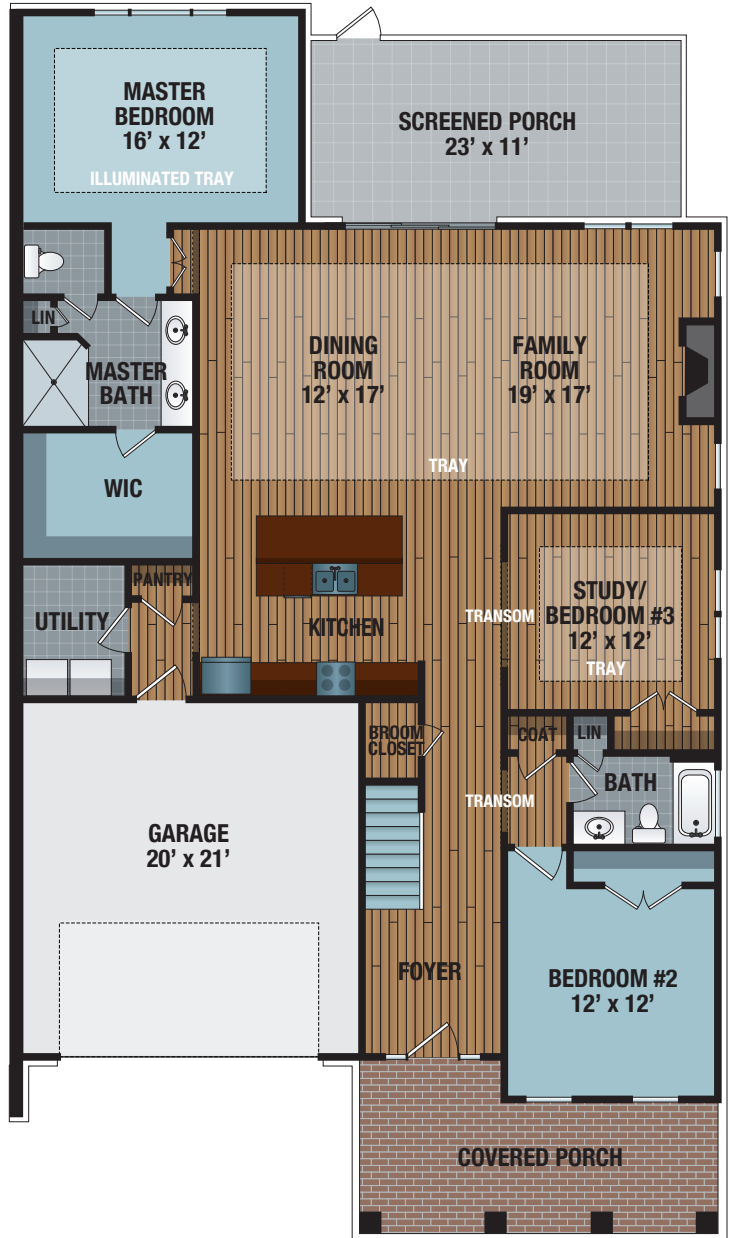
ELEVATION F3 LEFT

ELEVATION F3 RIGHT



ELEVATION F4 LEFT

ELEVATION F4 RIGHT



© 2019 Trusst Builder Group
 This floorplan is an artist's illustration of a simplified general preliminary plan, is incomplete, and is subject to future revision. Dimensions, boundaries and relative locations shown on this floorplan and other promotional materials are for illustrative purposes only, and final construction plans, including dimensions, layout and area, may vary from this floorplan. Final construction plans will be available for review before contract execution.